

# Machine Fingerprint SDK

SecuTech Solution Inc.

Aug 2006



## Background

SecuTech Solution Inc. is a market oriented software copy-protection dongle vendor, dedicated in providing today's software development industry with the most technologically advanced and simple-to-use products to protect intellectual property.

Based on our professional analysis, 90% of problems faced by end-users is "dongle not found" type problems. In a response to decrease the burden of software vendors dealing with this type of unwanted problem SecuTech has developed a "driverless" dongle. Our Unikey dongle requires no driver interface to be installed - it is completely "plug and play without a driver". Never again will the software vendor have to respond to the common problem of "dongle not found" – resulting in less tech support time for the dongle and hence cost savings.

## Machine Fingerprint

Human fingerprint technology is commonly used in today's industry to identify authorized personnel, and in many instances we also use the unique identity of the computer itself to identify authorized usage and access.

In general, there are 3 items that need to be considered in computer fingerprinting; CPU ID, hard disk serial number and the network adapter's MAC address.

In order to provide better service, SecuTech Solution Inc. has made a machine fingerprint SDK for customers using Unikey. Taking advantage of such a tool, you can easily track the CPU ID, hard disk serial number and network adapter's MAC address.

SecuTech provides a secure way to acquire this information - all the data is hashed, and the algorithm is inverted, so without the same hardware information you cannot get the same results.

## Usage of APIs

In the SDK, we only provide libraries that you can link to your applications.

There are 3 APIs in the SDK.

```
extern BOOL GetNetMacHash(BYTE *mHash);  
extern BOOL GetHarddiskHash(BYTE *mHash);
```



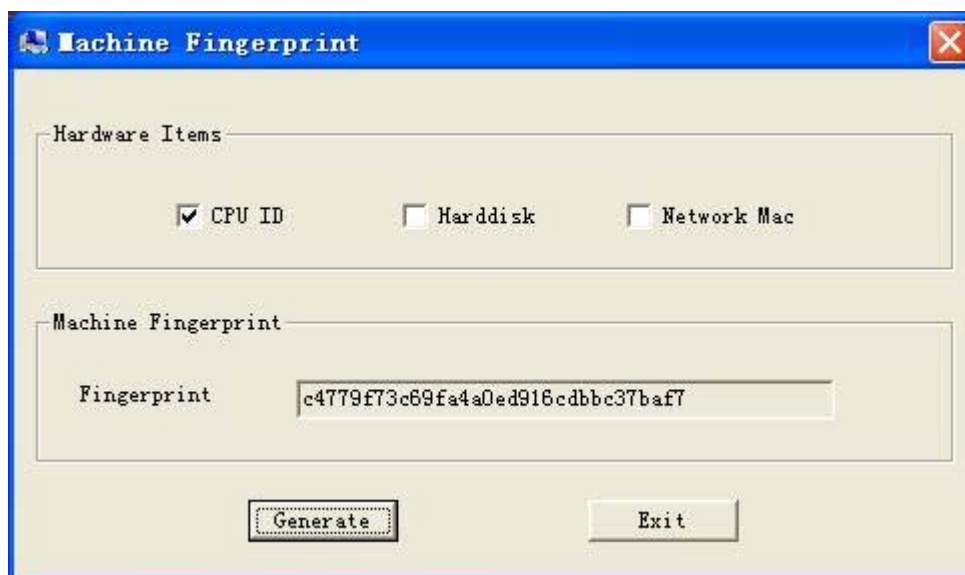
```
extern BOOL GetCPUIDHash(BYTE *mHash);
```

The returned value 'True' means success, while 'False' means failure.

The argument mHash is a 16-byte long array, which contains the hashed value of the corresponding ID. Please refer to the source file of the Machine Fingerprint for details.

## Usage of Application

The application of machine fingerprint provides a GUI tool to track the machine fingerprint. We also provide its source codes for reference.



To generate the fingerprint of certain hardware, please select the hardware items, and then press "Generate" to generate the combined fingerprint. You can also copy the fingerprint to clipboard.

## About SecuTech Solution Inc.



## Cookbook

■ ■ ■ ■

SecuTech Solution Inc, based in Canada, specializing in software license management business systems, is a target market oriented organization with strong technical support and is internationally focused in providing cutting-edge technological solutions in the fields of the protection of intellectual property.

### **SecuTech Solution Inc.**

[Sales@eSecuTech.com](mailto:Sales@eSecuTech.com)

[www.eSecuTech.com](http://www.eSecuTech.com)